

## Product Specifications

|                    |                                       |
|--------------------|---------------------------------------|
| Cannula:           | Soft cannula                          |
| Insertion angle:   | 20-45 degrees                         |
| Needle gauge:      | G27                                   |
| Introducer needle: | Stainless steel                       |
| Cannula length:    | 18 mm                                 |
| Membrane:          | Self-sealing, for multiple injections |
| Adhesive:          | Yes                                   |

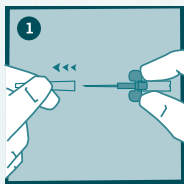
Insulin is injected through the soft cannula by means of a syringe or a pen. To do this, insert the needle tip of the syringe or pen into the opening and pierce the sealing membrane. **Caution:** Do not use a needle more than 10.5 mm long or shorter than 5 mm. Do not use a needle thicker than 0.4 mm (27 gauge).

Each customer box contains 10 pieces and each shipper box contains 200 pieces.

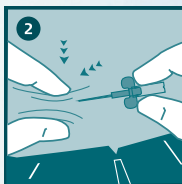
# Fact Card

Distributed by:

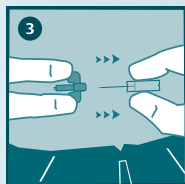
# insuflon™ indwelling catheter user steps



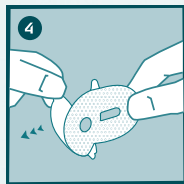
Remove the needle guard.



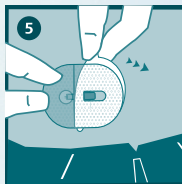
Pinch the skin with one hand and insert the insuflon™ indwelling catheter at a 20-45 degree angle.



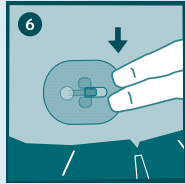
Remove the introducer needle.



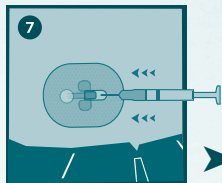
Remove half of the backing paper on the adhesive pad.



Place the transparent window of the adhesive pad on the injection site and remove the remaining backing paper.



Press the adhesive to secure the insuflon™ indwelling catheter to the skin.



Administer the insulin through the self-sealing membrane.

Please note, when injecting insulin into a newly inserted insuflon™ indwelling catheter, the dead space in the cannula needs to be filled.

Please note that this guide only illustrates some of the steps to follow when inserting the insuflon™ indwelling catheter and it is not a substitute for reading the instructions for use which comes with the product.

insuflon is a trademark of Unomedical a/s

©2013 ConvaTec Inc.  
AP-014144-MIM

ConvaTec 