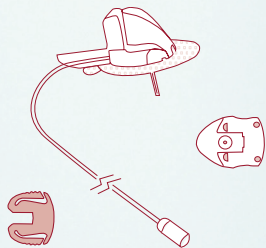


neria™ soft 90 infusion sets



Product Specifications

Cannula material:	Soft
Insertion angle:	90 degrees (straight in)
Disconnection:	Yes at site
Introducer needle gauge:	G27
Soft cannula diameter:	0.68 mm
Soft cannula lengths:	6 or 9 mm
Tubing lengths:	30, 60 or 110 cm
Adhesive:	Built-in
Needle safety:	Yes, active needle safety system

Soft cannula lengths

- 6 mm
- 9 mm

Tubing lengths

- 30 cm
- 60 cm
- 110 cm

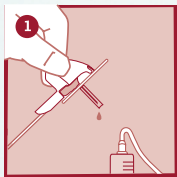
The neria™ soft 90 infusion sets are sold in boxes containing 10 sets. Soft cannulae and tubing are also sold separately – in boxes containing 10 pcs/box.

Fact Card

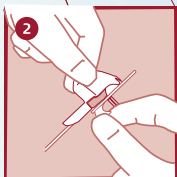
Distributed by:



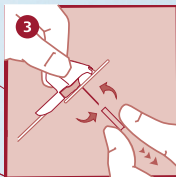
neria™ soft 90 infusion sets user steps



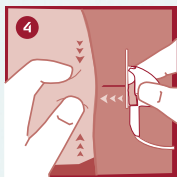
1 Prime the infusion set according to the pump manufacturer's instructions.



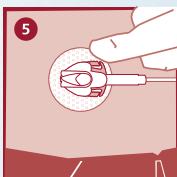
2 Pull gently to remove the backing paper.



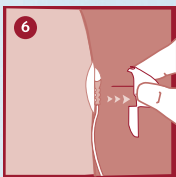
3 Gently twist and pull to remove the needle guard.



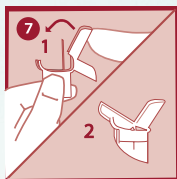
4 Pinch the skin and insert the neria™ soft 90 infusion set at a 90 degree angle (straight in).



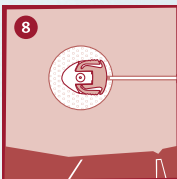
5 Press the adhesive onto the skin.



6 Remove the introducer needle by gently pulling the insertion handle straight up.



7 Secure the introducer needle by closing the insertion handle to cover the needle.



8 Check the infusion site frequently.

Please note that this guide only illustrates some of the steps to follow when inserting the neria™ soft 90 infusion sets and it is not a substitute for reading the instructions for use which comes with the product.