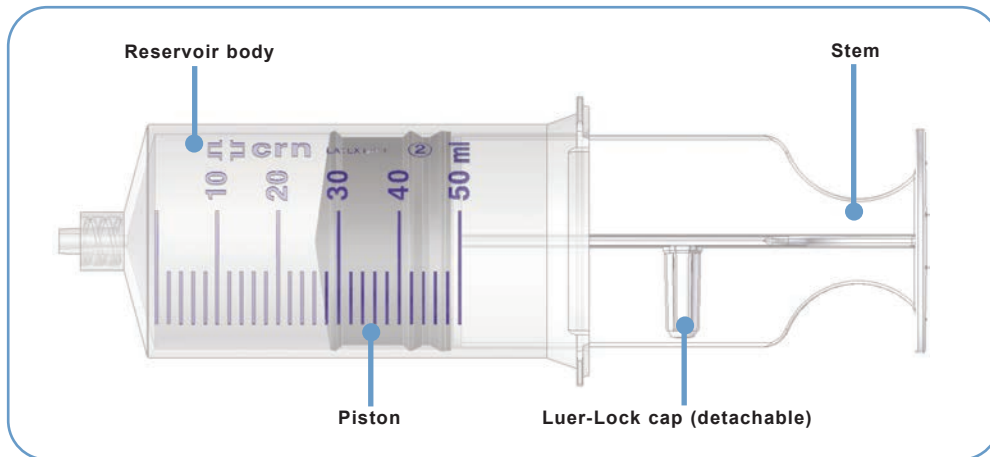


RESERVOIR

The Crono 50 pump uses a 50 ml specific reservoir.

Features of the reservoir:

- Sterile.
- Disposable.
- Apyrogenous.
- Do not use if the package is damaged or open.



LUER LOCK CAP

The luer lock cap is connected to the stem of the reservoir from which it is detached by applying a little pressure. Functions of the luer lock cap:

- After filling the reservoir, it assists in unscrewing the stem from the piston;
- **It assists in the correct connection between the pushing unit of the pump and the rubber piston of the syringe;**
- It protects the medication inside the reservoir should it not be immediately used.



Warning

- For safety purposes the use of original CRN[®] Crono[®] Reservoir syringes is recommended.
- The use of reservoirs of other types may damage the pump and harm its user.
- CANÈ S.p.A. is exempt from any responsibility should the device be used with other syringes than those recommended.

CRONO 50: PREPARING THE RESERVOIR

1. Refer to the Medication's Instructions for Use when selecting the appropriate device for transferring of the medication from the vial into the Crono Syringe.
2. Attach the luer-lock cap and then unscrew the piston rod of the syringe counter-clock wise with a fairly swift movement;

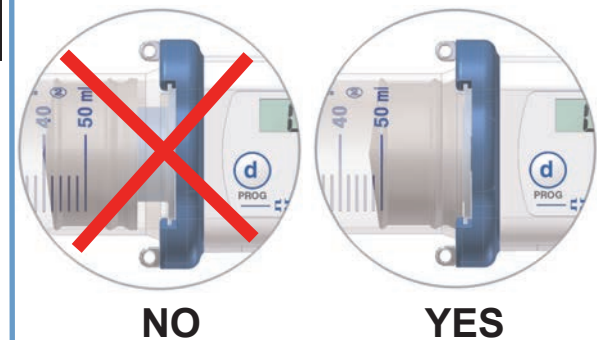
3. Attach the syringe to the pump with a 90° rotation and continue the movement until the syringe clicks into its correct position.
4. Attach the butterfly needle cone onto the syringe



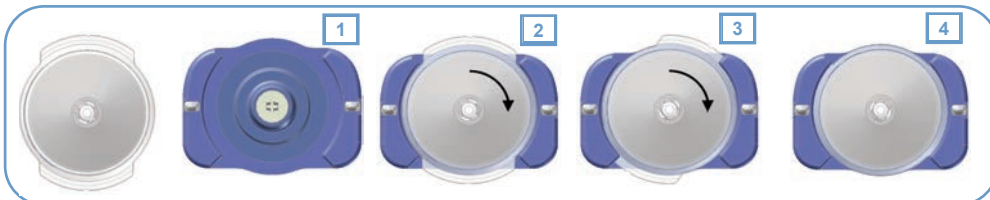
ANTI FREE FLOW SAFETY SYSTEM

The term “free flow” means possible uncontrolled administration of a medication caused by the effect of the force of gravity. To avoid this, the pushing unit is equipped with a special profile that is attached to the inside of the rubber piston of the reservoir and binds them together.

The effectiveness of the safety system is guaranteed only by the correct attachment of the piston to the pushing unit as indicated in this figure:



ATTACHING THE RESERVOIR TO THE DEVICE



Attention

The reservoir must be completely filled to allow the connection of the rubber piston to the pushing unit.

The rubber piston of the reservoir must be connected to the pushing unit of the pump; if this does not occur the following conditions may happen:

- The infusion incurs a delay and is imprecise.
- The connection between the pushing unit and the piston is incorrect and therefore the safety of the anti free flow system is not guaranteed.